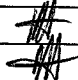

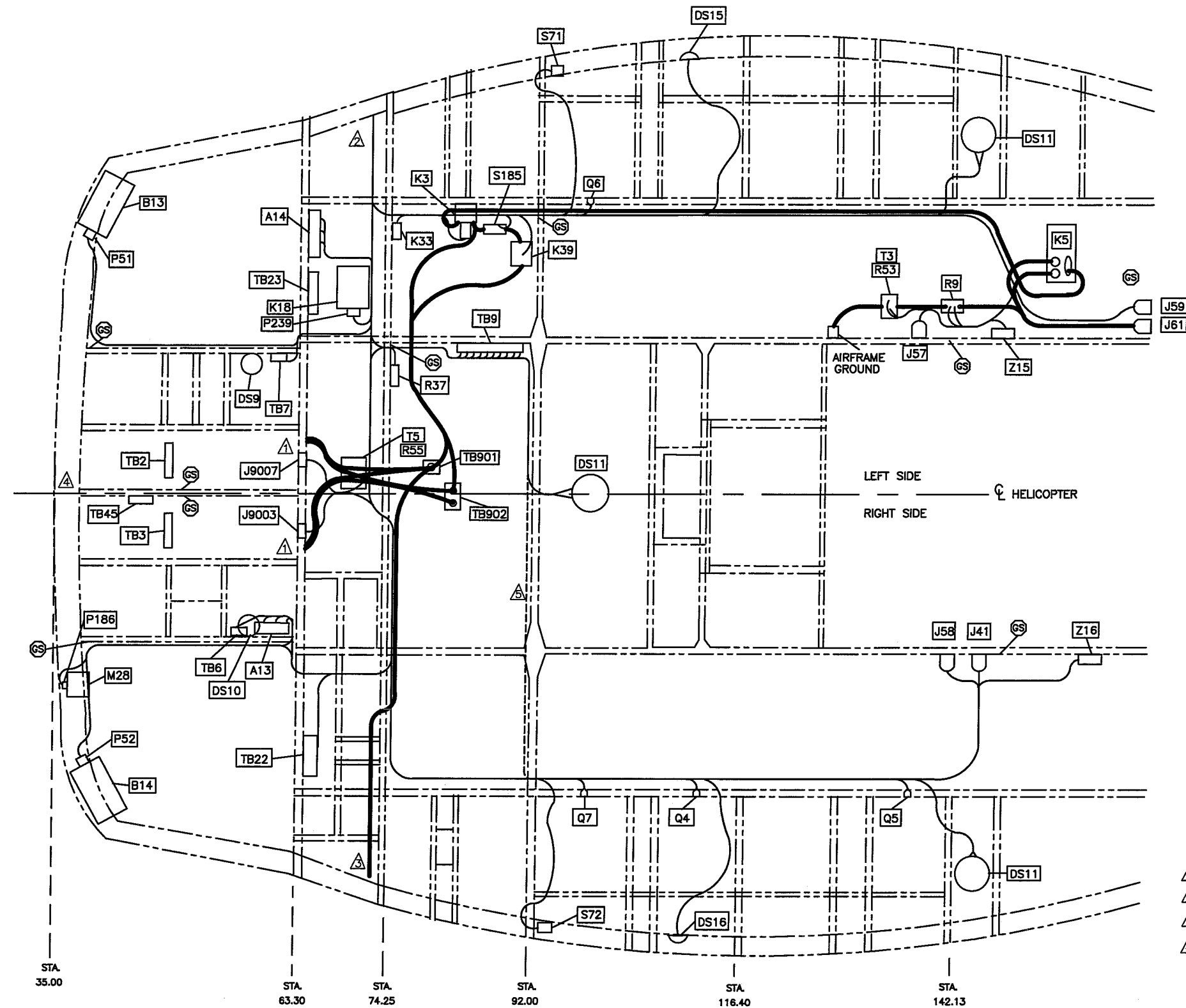


WIRING ROUTING REVISIONS LIST

WIRING DIAGRAM NUMBER BHT-212-MM	WIRING ROUTING D212-725-8-G2	SHEET #	REV	DATE	NOTES
N/A	N/A	1	A	08.03.14	-Wiring routing revisions list sheet 1
CHAPTER 96	WIRING ROUTING ROOF	1	A	08.03.14	-New issue for Generation 2 helicopters
CHAPTER 96	WIRING ROUTING FLOOR	2	A	08.03.14	-New issue for Generation 2 helicopters
CHAPTER 96	WIRING ROUTING UPPER NOSE AREA	3	A	08.03.14	-New issue for Generation 2 helicopters
CHAPTER 96	WIRING ROUTING	4	A	08.03.14	-New issue for Generation 2 helicopters
CHAPTER 96	WIRING ROUTING FWD HELLHOLE	5	A	08.03.14	-New issue for Generation 2 helicopters
CHAPTER 96	WIRING ROUTING AFT HELLHOLE	6	A	08.03.14	-New issue for Generation 2 helicopters
CHAPTER 96	WIRING ROUTING TAIL	7	A	08.03.14	-New issue for Generation 2 helicopters
CHAPTER 96	WIRING ROUTING TRANSMISSION	8	A	08.03.14	-New issue for Generation 2 helicopters

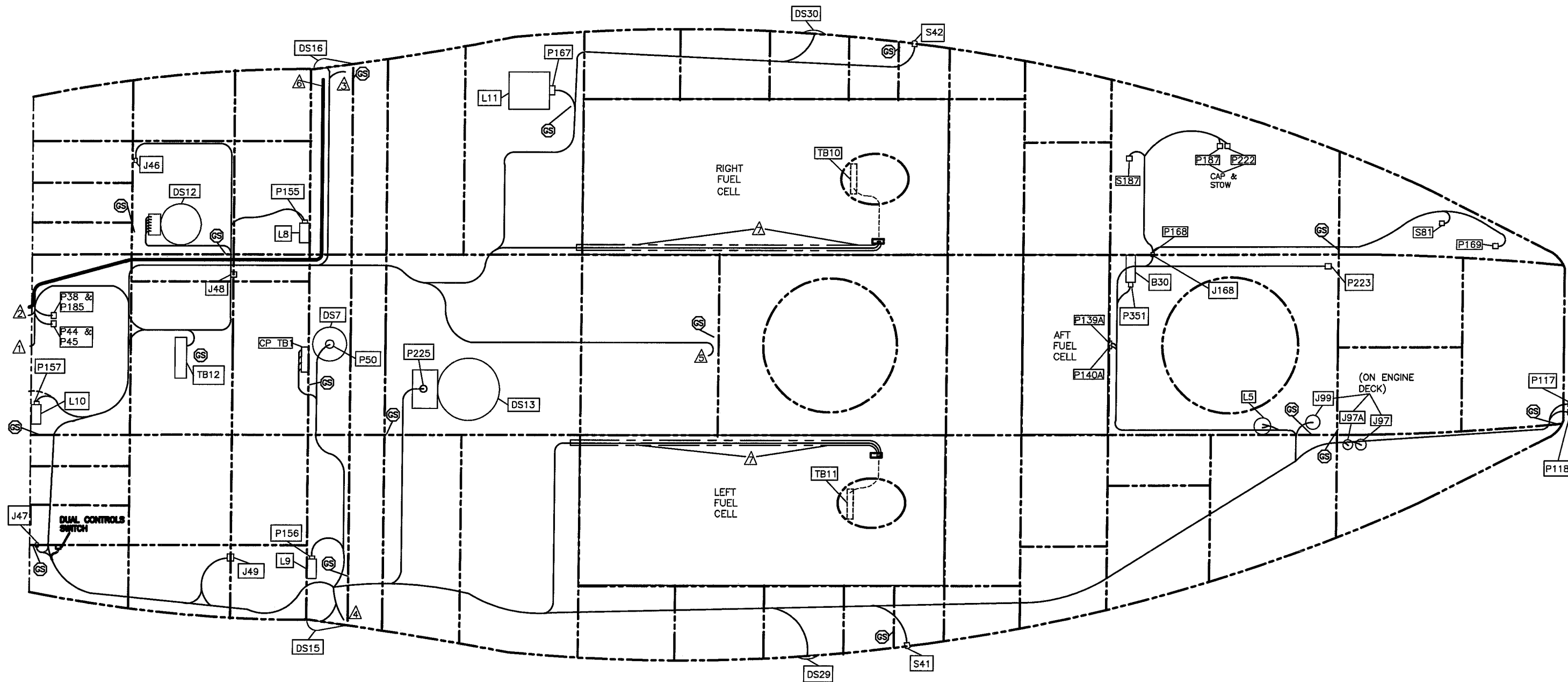
DESIGN	RD	DART AEROSPACE LTD HAWKESBURY, ONTARIO, CANADA
DRAWN	RD	
CHECKED	RD	DRAWING NO. REV. A
MFG. APPR.	N/A	D212-725-8-G2 SHEET 1 OF 1
APPROVED		TITLE SCALE
DE APPR.		WIRING ROUTING DIAGRAMS NTS
DATE	08.03.14	COPYRIGHT © 2008 BY DART AEROSPACE LTD <small>THIS DOCUMENT IS PRIVATE AND CONFIDENTIAL AND IS SUPPLIED ON THE EXPRESS CONDITION THAT IT IS NOT TO BE USED FOR ANY PURPOSE OR COPIED OR COMMUNICATED TO ANY OTHER PERSON WITHOUT WRITTEN PERMISSION FROM DART AEROSPACE LTD.</small>



- △ CABLES ROUTE INTO CB PANELS.
- △ WIRE BUNDLE ROUTES DOWN LH SIDEWALL.
- △ CABLE ROUTES DOWN RH SIDEWALL TO LOWER NOSE COMPARTMENT.
- △ INSTALL GROUND STUDS AS INDICATED BY GS
- △ INSTALL GROUND STUDS I.A.W. BHT-ELEC-SPM

WIRING ROUTING - ROOF
 VIEW LOOKING UP AT LOWER ROOF STRUCTURE
 (EFFECTIVE ON ALL S/N, EXCEPT 30687, 30931, 30576, 30817 & 30599)

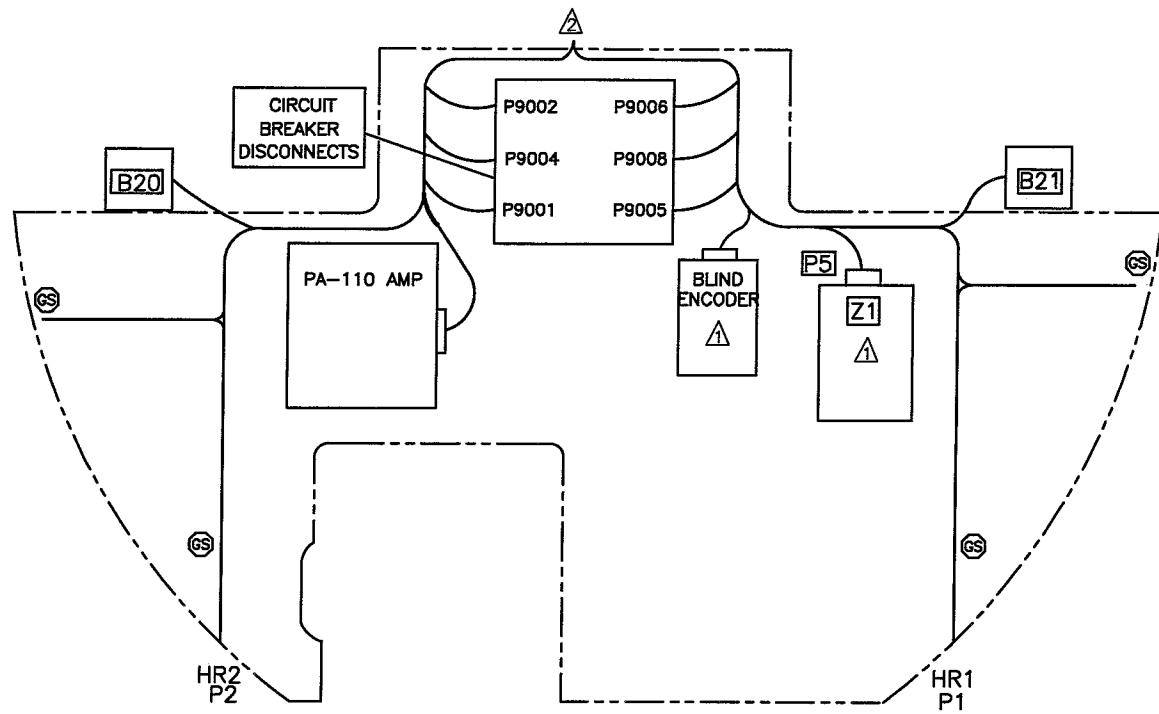
DESIGN	DRAWN BY	DART DART AEROSPACE LTD HAWKESBURY, ONTARIO, CANADA	
RD	RD		
CHECKED	APPROVED	DRAWING NO.	REV. A
RD	<i>[Signature]</i>	D212-725-8-G2	SHEET 1 OF 8
DATE		TITLE	SCALE
08.03.14		WIRING ROUTING - ROOF	NTS



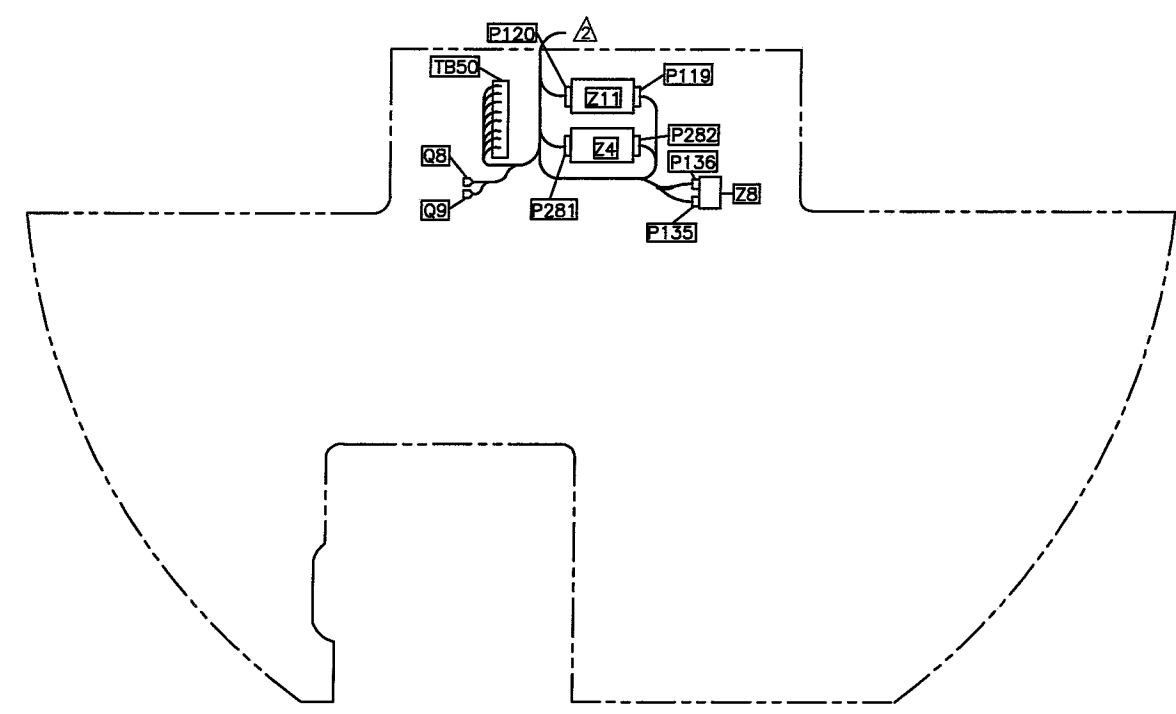
- ▲ WIRE BUNDLE ROUTES UP TO CB PANEL DISCONNECTS.
- ▲ WIRE BUNDLE ROUTES FORWARD TO LOWER NOSE COMPARTMENT.
- ▲ WIRE BUNDLE ROUTES UP RH SIDEWALL TO Z55 & DS26.
- ▲ WIRE BUNDLE ROUTES UP LH SIDEWALL FOR CEILING WIRE RUNS.
- ▲ WIRE BUNDLE IS CAPPED AND STOWED UNLESS LONGLINE/HELITORCH SYSTEM INSTALLED
- ▲ CABLE ROUTES UP RH SIDEWALL TO TB901
- ▲ WIRING TO BE ENCLOSED IN TYGON R-3603 TUBING (Or Equivalent) INSIDE LEFT & RIGHT FUEL CELL AREA
- ▲ INSTALL GROUND STUDS AS INDICATED BY Ⓞ
- ▲ INSTALL GROUND STUDS I.A.W. BHT-ELEC-SPM

WIRING ROUTING - FLOOR
 VIEW LOOKING DOWN AT FLOOR STRUCTURE
 (EFFECTIVE ON ALL S/N, EXCEPT 30687, 30931, 30576, 30817 & 30599)

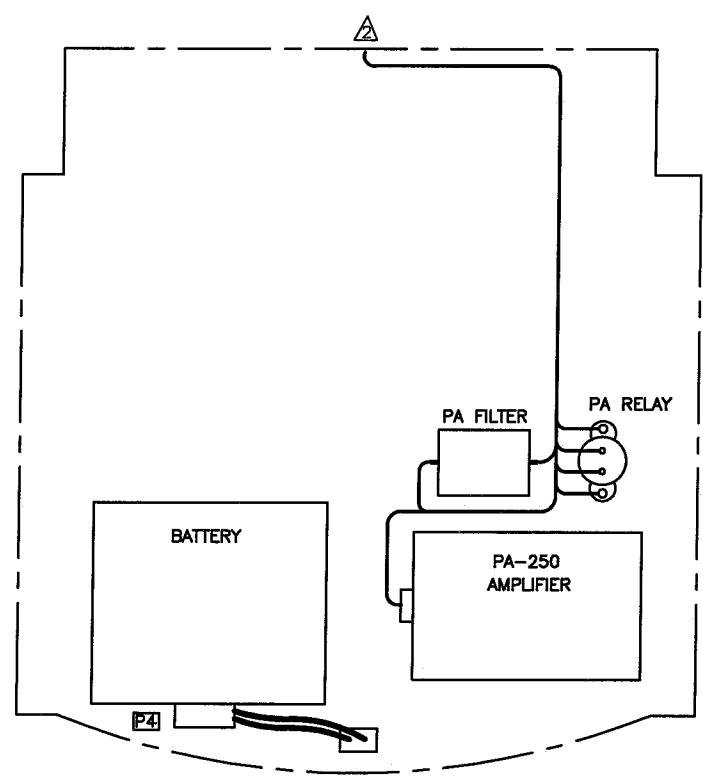
DESIGN	DRAWN BY	DART DART AEROSPACE LTD HAWKESBURY, ONTARIO, CANADA	REV. A
RD	RD		DRAWING NO. D212-725-8-G2
CHECKED	APPROVED	TITLE	SCALE
RD	<i>[Signature]</i>	WIRING ROUTING - FLOOR	NTS
DATE			
08.03.14			



UPPER SHELF - TOP SIDE



UPPER SHELF - BOTTOM SIDE

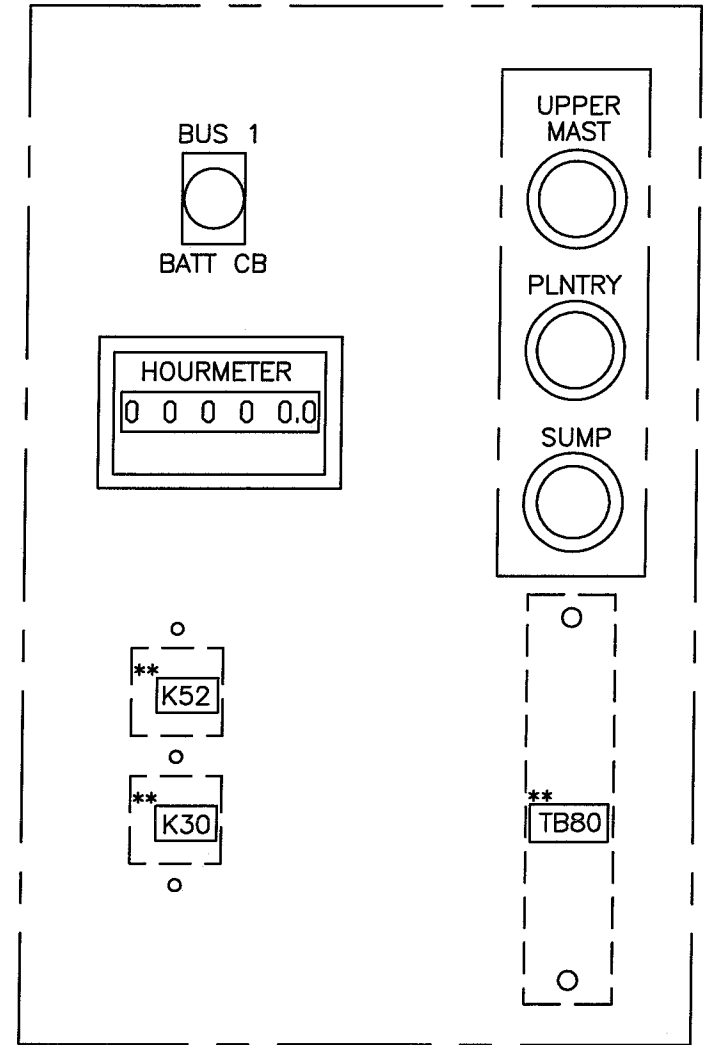
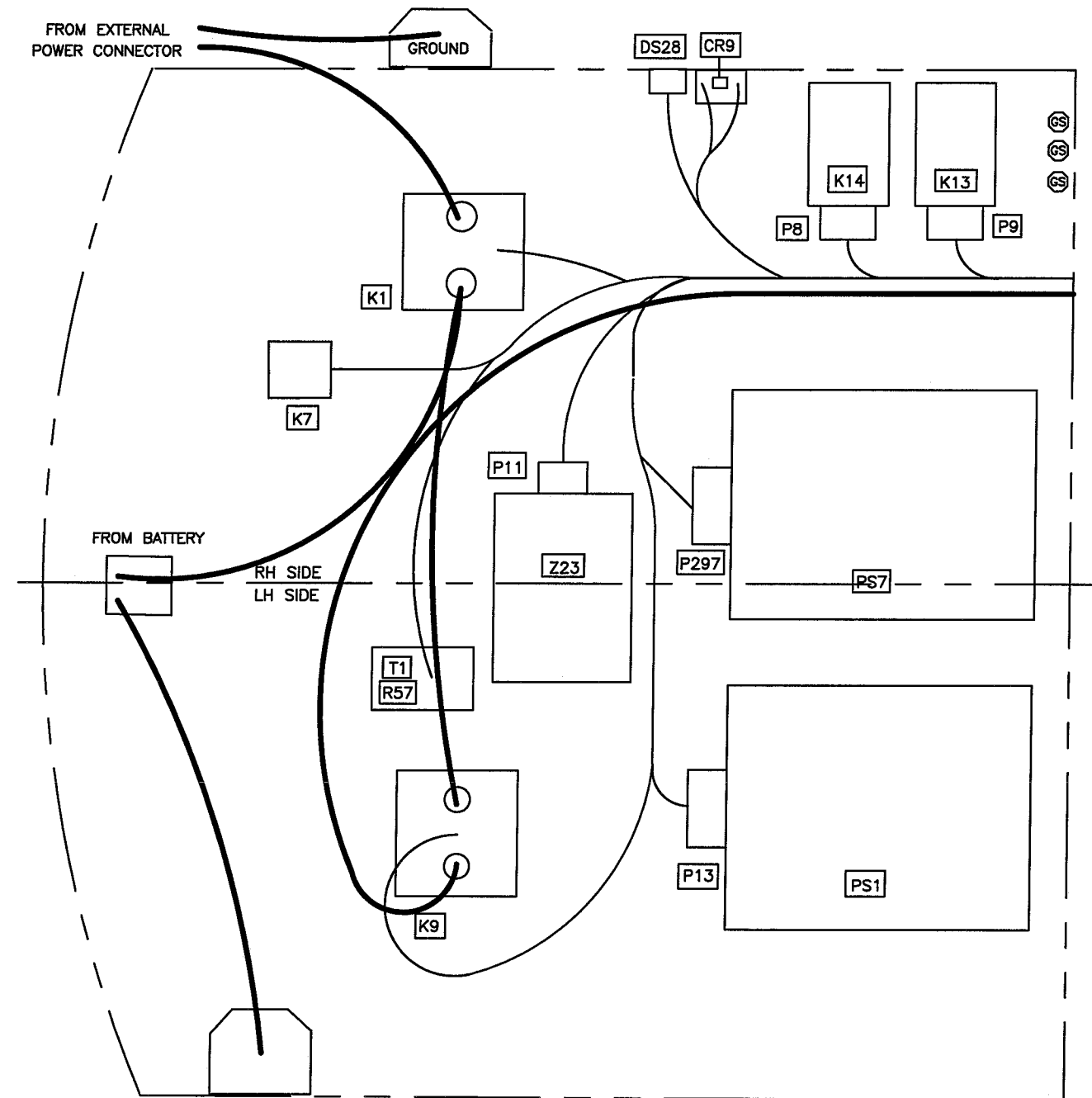


LOWER SHELF - BOTTOM SIDE

(EFFECTIVE ON ALL S/N, EXCEPT 30687, 30931, 30576, 30817 & 30599)

- NOTES:
- ⚠ COMPONENT PLACEMENT MAY VARY DUE TO AVIONICS INSTALLATIONS
 - ⚠ WIRE BUNDLE ROUTES TO MAIN BUNDLE.
 - ⚠ INSTALL GROUND STUDS AS INDICATED BY GS
INSTALL GROUND STUDS I.A.W. BHT-ELEC-SPM


DESIGN RD	DRAWN BY RD	DART DART AEROSPACE LTD HAMKESBURY, ONTARIO, CANADA	REV. A
CHECKED RD	APPROVED <i>[Signature]</i>		DRAWING NO. D212-725-8-G2
DATE 08.03.14		TITLE WIRING ROUTING - UPPER NOSE AREA	SCALE NTS

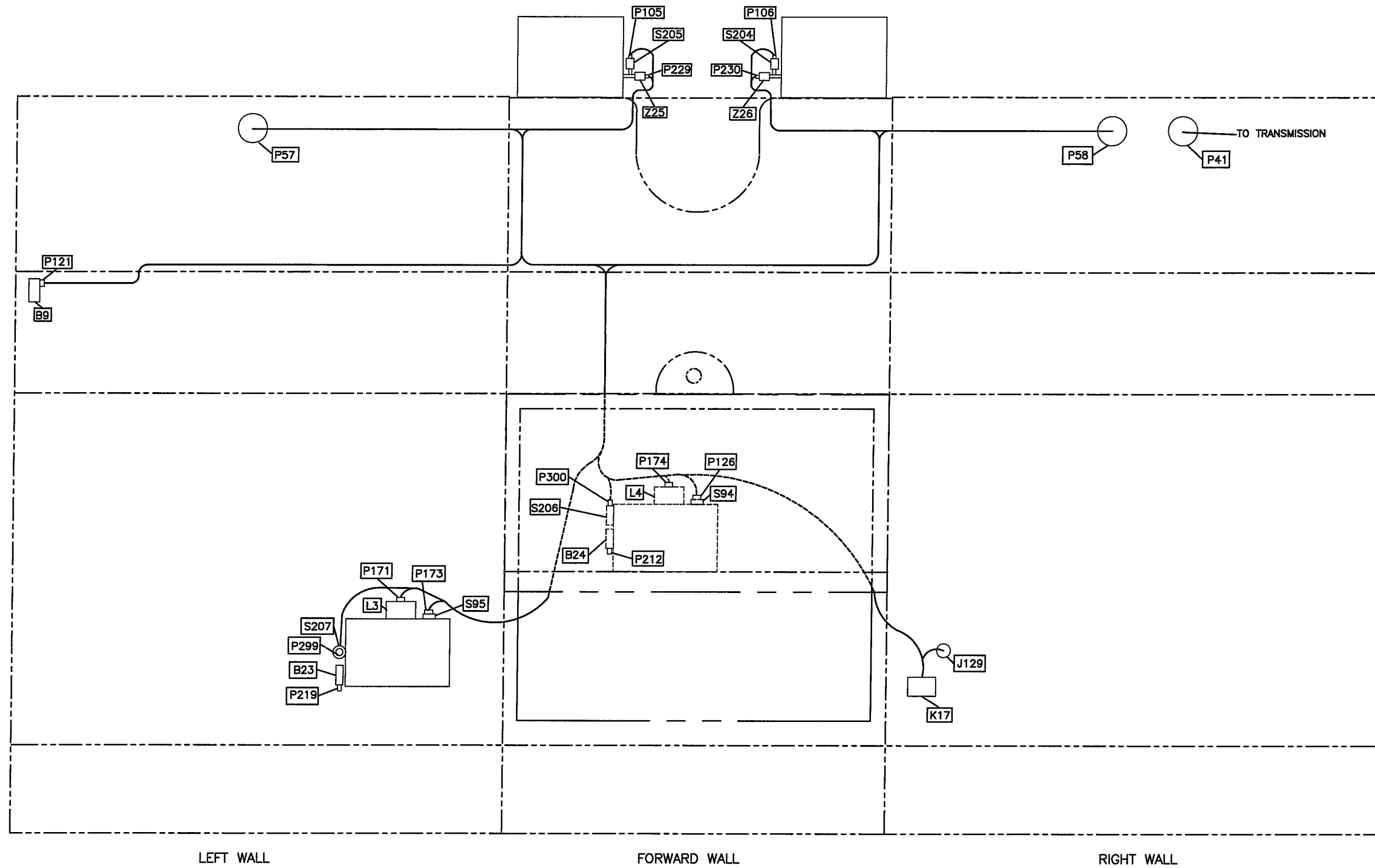


HOURMETER PANEL ** INSTALLED ON BACK SIDE OF PANEL

⚠ INSTALL GROUND STUDS AS INDICATED BY 
 INSTALL GROUND STUDS I.A.W. BHT-ELEC-SPM

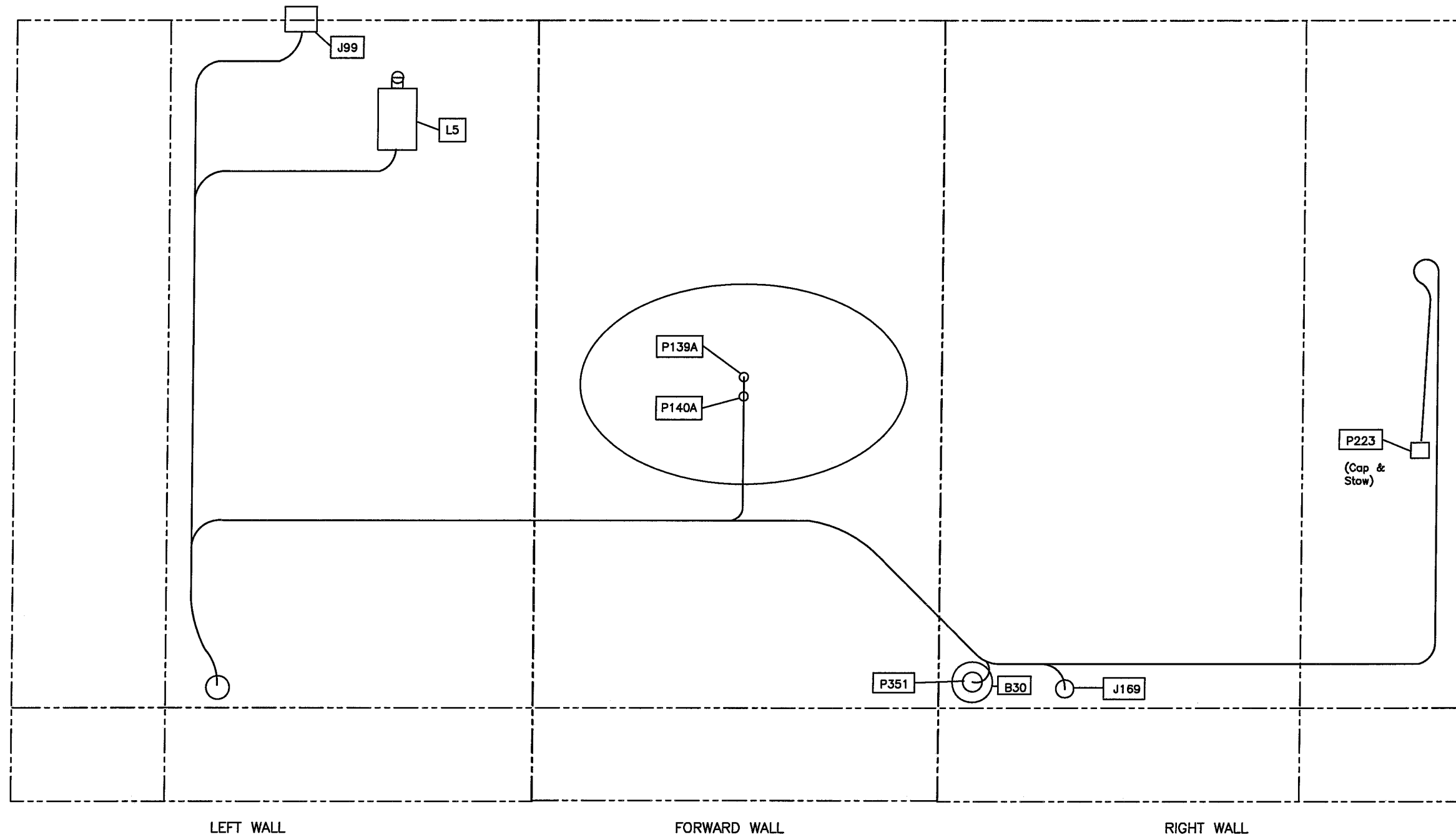
WIRING ROUTING – LOWER NOSE COMPARTMENT
 (EFFECTIVE ON ALL S/N, EXCEPT 30687, 30931, 30576, 30817 & 30599)

DESIGN	DRAWN BY	DART DART AEROSPACE LTD HAWKESBURY, ONTARIO, CANADA	REV. A
RD	RD		
CHECKED	APPROVED	DRAWING NO.	SHEET 4 OF 8
RD		D212-725-8-G2	
DATE	TITLE	SCALE	NTS
08.03.14	WIRING ROUTING		



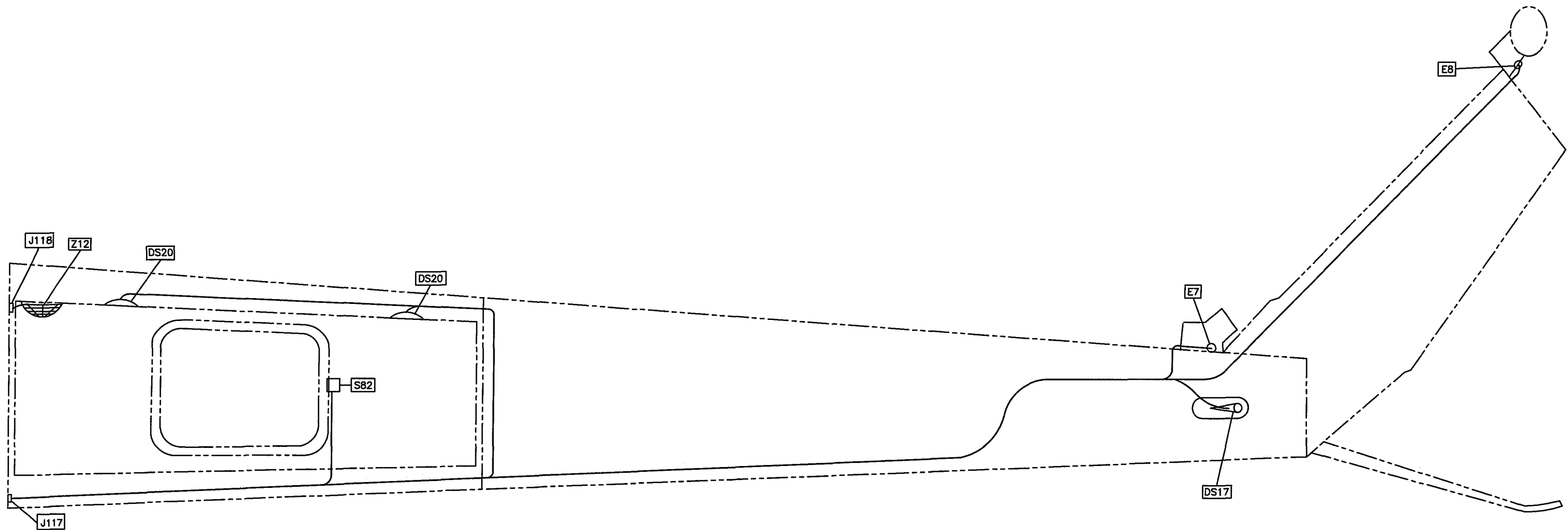
WIRING ROUTING - FWD HELLHOLE
 (EFFECTIVE ON ALL S/N, EXCEPT 30687, 30931, 30576, 30817 & 30599)

DESIGN	DRAWN BY	DART DART AEROSPACE LTD HAWKESBURY, ONTARIO, CANADA	REV. A
RD	RD		DRAWING NO. D212-725-8-G2
CHECKED	APPROVED	TITLE	SCALE
RD	<i>[Signature]</i>	WIRING ROUTING - FWD HELLHOLE	NTS
DATE			
08.03.14			



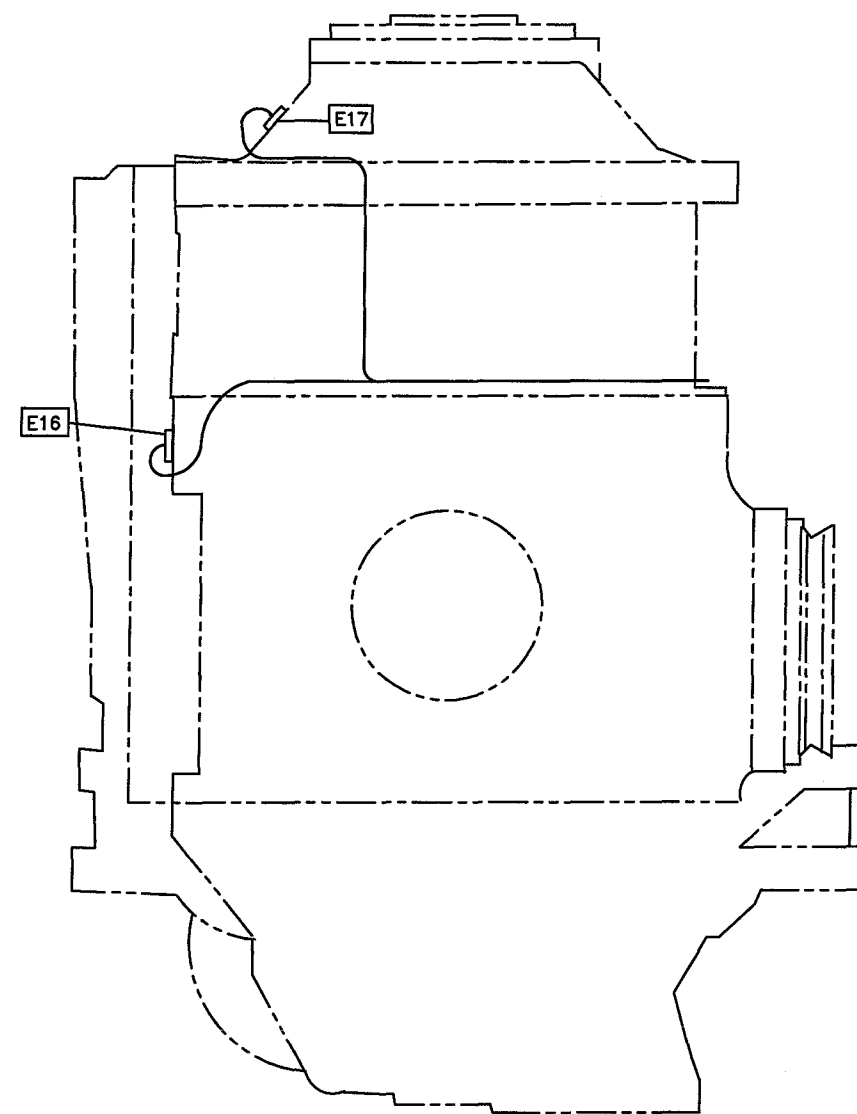
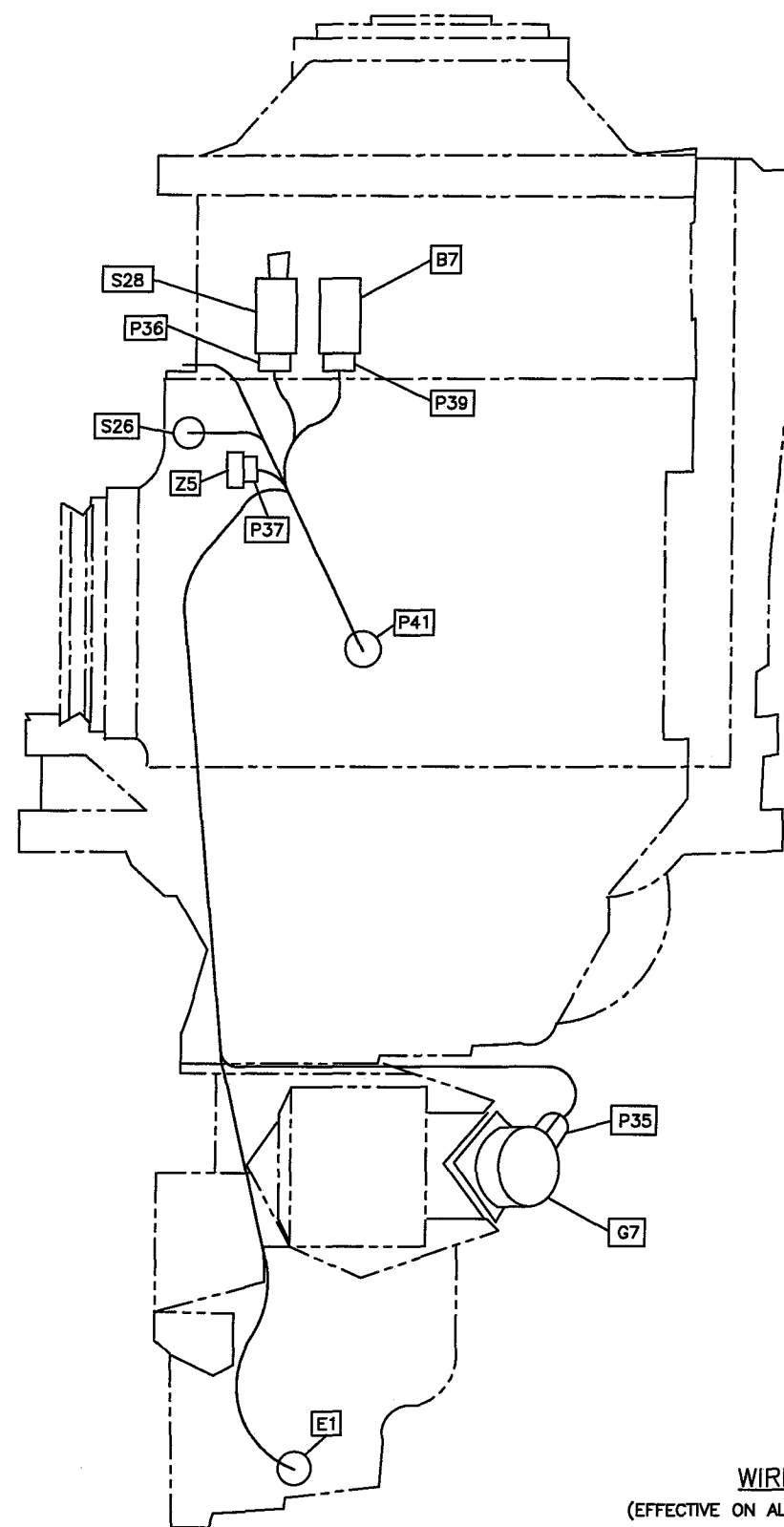
WIRING ROUTING – AFT HELLHOLE
 (EFFECTIVE ON ALL S/N, EXCEPT 30887, 30931, 30576, 30817 & 30599)

DESIGN	DRAWN BY	DART DART AEROSPACE LTD HAWKESBURY, ONTARIO, CANADA	REV. A
RD	RD		DRAWING NO. D212-725-8-G2
CHECKED	APPROVED		SHEET 6 OF 8
RD	<i>[Signature]</i>	TITLE	SCALE
DATE	08.03.14	WIRING ROUTING – AFT HELLHOLE	NTS



WIRING ROUTING - TAIL
 (EFFECTIVE ON ALL S/N, EXCEPT 30687, 30931, 30576, 30817 & 30599)

DESIGN	DRAWN BY	DART DART AEROSPACE LTD HAWKESBURY, ONTARIO, CANADA	REV. A
RD	RD		
CHECKED	APPROVED	DRAWING NO.	SHEET 7 OF 8
RD	<i>[Signature]</i>	D212-725-8-G2	
DATE		TITLE	SCALE
08.03.14		WIRING ROUTING - TAIL	NTS



WIRING ROUTING - TRANSMISSION
 (EFFECTIVE ON ALL S/N, EXCEPT 30687, 30931, 30576, 30817 & 30599)

DESIGN	DRAWN BY	DART DART AEROSPACE LTD HAWKESBURY, ONTARIO, CANADA	REV. A
RD	RD		
CHECKED	APPROVED	DRAWING NO.	SHEET 8 OF 8
RD	<i>[Signature]</i>	D212-725-8-G2	
DATE		TITLE	SCALE
08.03.14		WIRING ROUTING - TRANSMISSION	NTS